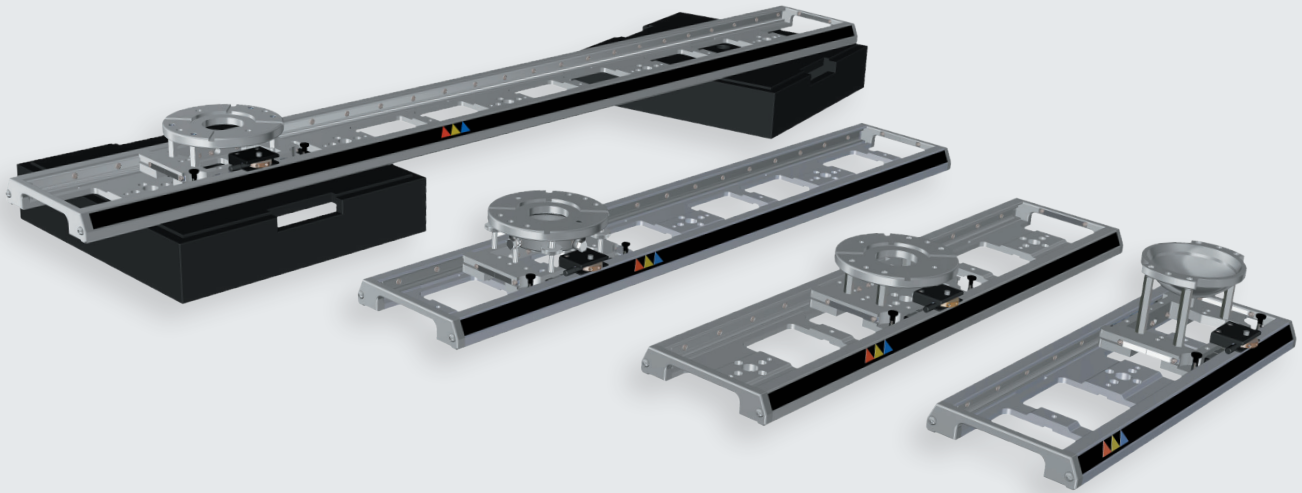




KEY GRIP SYSTEMS
Development

CAMERA SUPPORTS

Sliders



An ideal movement

Our range of Sliders is the ideal equipment for carefully controlled yet flexible camera movements. Sliders are available in four lengths: **2'** (64cm), **3'** (96cm), **4'** (1.28m), **6'** (1.98m).

A choice of three models of sliding bases can be mounted on the sliders:

- > the first is fitted with an adjustable levelling Mitchell (300) base
- > the second has a fixed Mitchell (300) base
- > the third has an Arri Bowl 150 base

Multiple sliding bases can be mounted on the same slider (a useful function when more than one camera is required on the same dolly).

The sliding bases are designed to carry loads, depending on the support scan, of between 20kg (45lbs) and more than 50kg (110lbs) and are fitted with two braking systems:

- > The first is designed to be used by the camera operator
- > the second makes it possible to lock the sliding base during handling and transport.

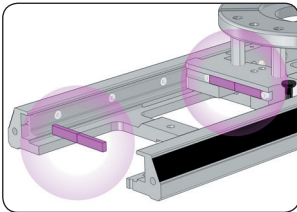
The Sliders can be fixed using Mitchell, European Coupling or Chapman adaptors. A rotating bracket can also be mounted between the Slider and these adaptors.



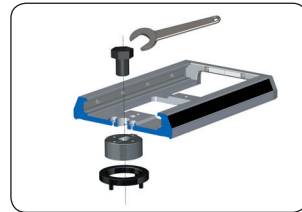
KEY GRIP SYSTEMS
Development

CAMERA SUPPORTS

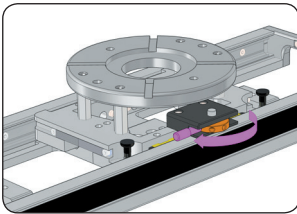
Sliders



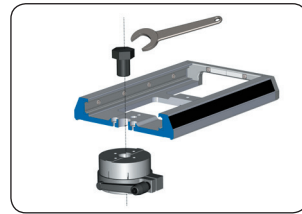
The sliders are equipped with magnetic stops.



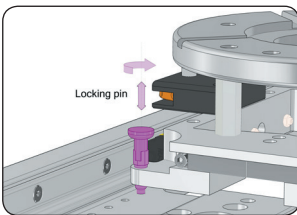
Sliders fit with adaptor to Mitchell base.



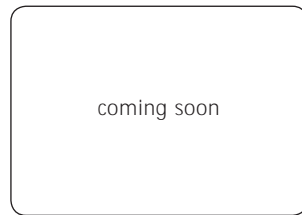
Each sliding base has smooth but strong precision break.



Sliders fit with adaptor to European Coupling.

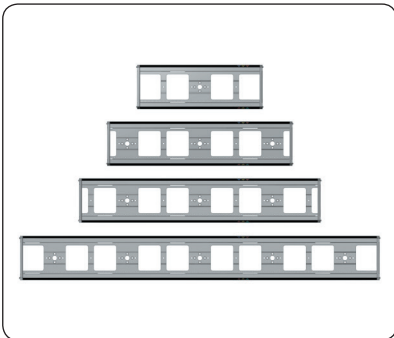


Sliding bases may be locked precisely in position with 2 locking pins.

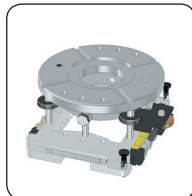


Rotating support

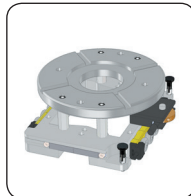
Sliders



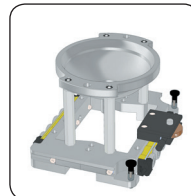
Adjustable levelling Mitchell sliding base



Fixed Mitchell Sliding base



Arribowl 150 sliding base



Rotating support



	width
	640 (25")
	960 (37 1/2")
	1280 (50")
	1920 (62 1/2")

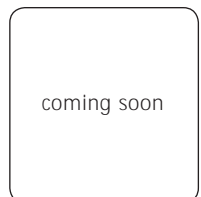
European coupling fitting



Michell fitting



Handle grip

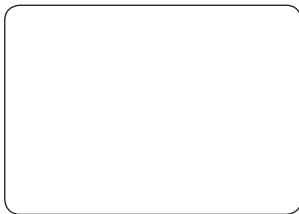


All lengths are available upon request.

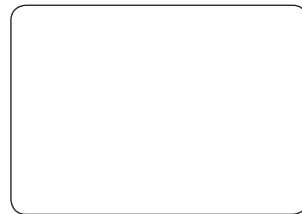


KEY GRIP SYSTEMS
Development

SUPPORTS CAMÉRA Sliders



€ .
€



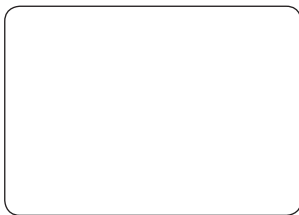
† .
, .



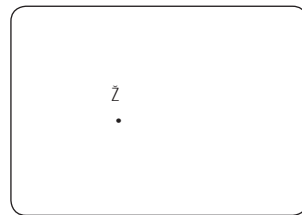
€



† .
ž ,

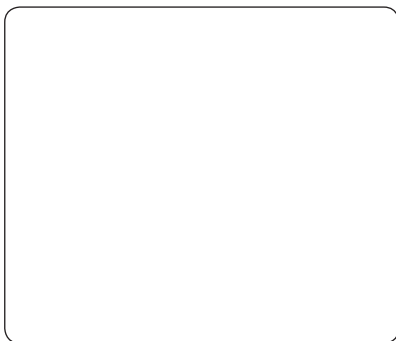


. .
. €

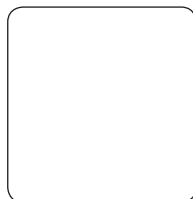


ž .

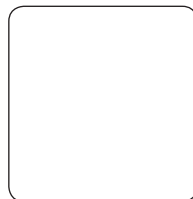
Sliders



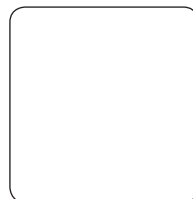
Chariot 300
réglable



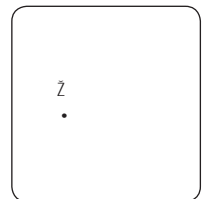
Chariot 300
A



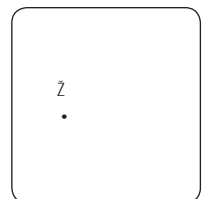
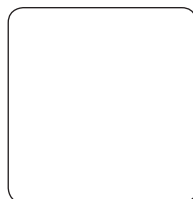
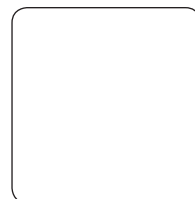
Chariot
120



Support rotatif



ž .



ž .

Longueur
640 mm
960 mm
1280 mm
1920 mm